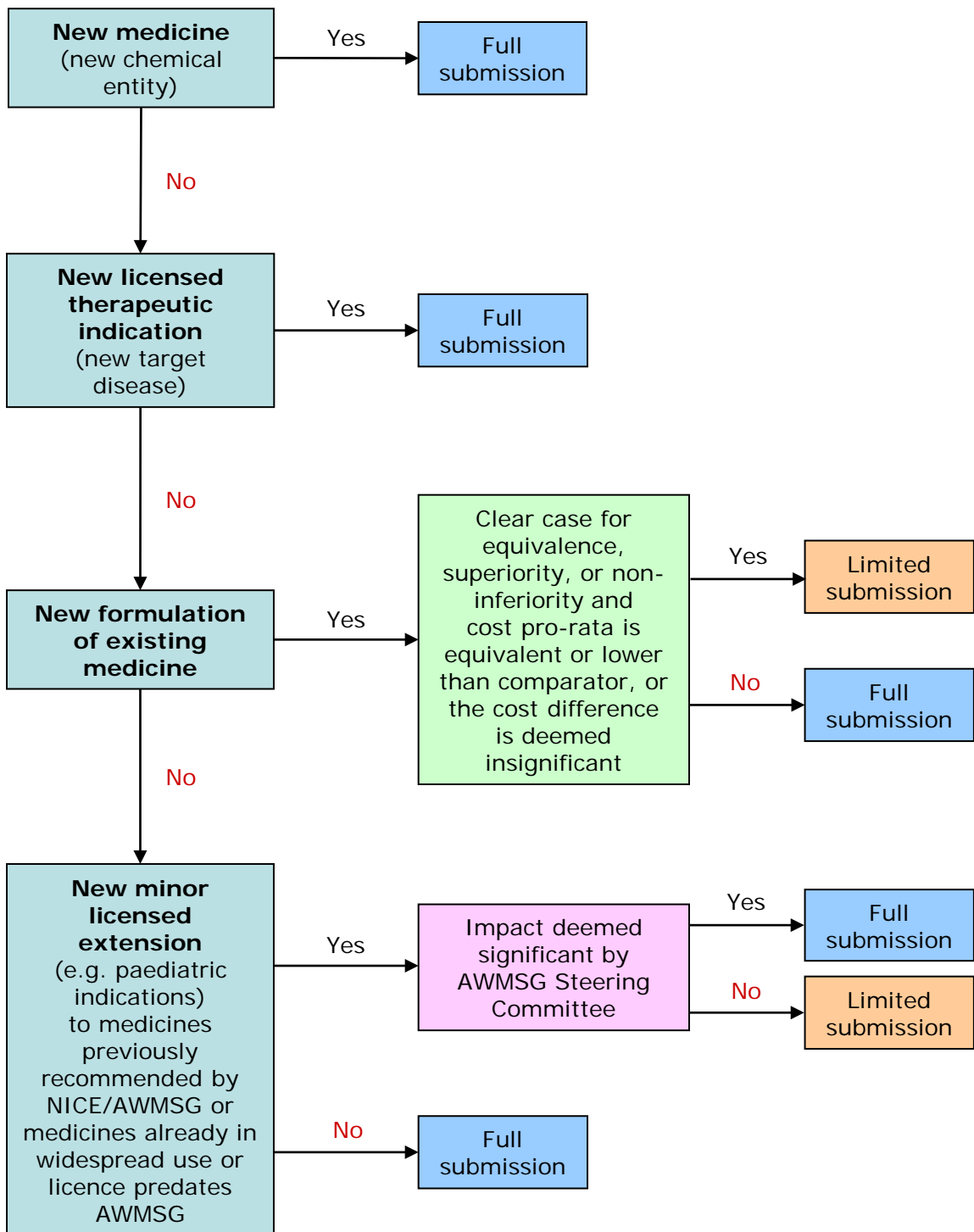


DECISION PROCESS FOR FULL & LIMITED SUBMISSIONS (FORM B/C)



The AWMSG Steering Committee reserves the right to request a full submission at any time and will provide a full explanation of its decision. If you intend on submitting a Wales Patient Access Scheme (WPAS) please refer to the Wales Patient Access Scheme section of the AWMSG website.