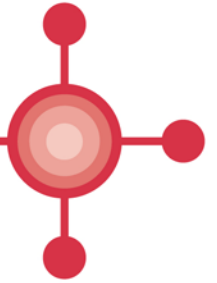


All Wales Medicines Strategy Group

Grŵp Strategaeth Meddyginiaethau Cymru Gyfan



# All Wales COPD Management and Prescribing Guideline

May 2019

This document has been prepared by the Respiratory Health Implementation Group, and has subsequently been endorsed by the All Wales Medicines Strategy Group (AWMSG).

Please direct any queries to AWTTTC:

All Wales Therapeutics and Toxicology Centre  
University Hospital Llandough  
Penlan Road  
Llandough  
Vale of Glamorgan  
CF64 2XX

[awtttc@wales.nhs.uk](mailto:awtttc@wales.nhs.uk)  
029 2071 6900

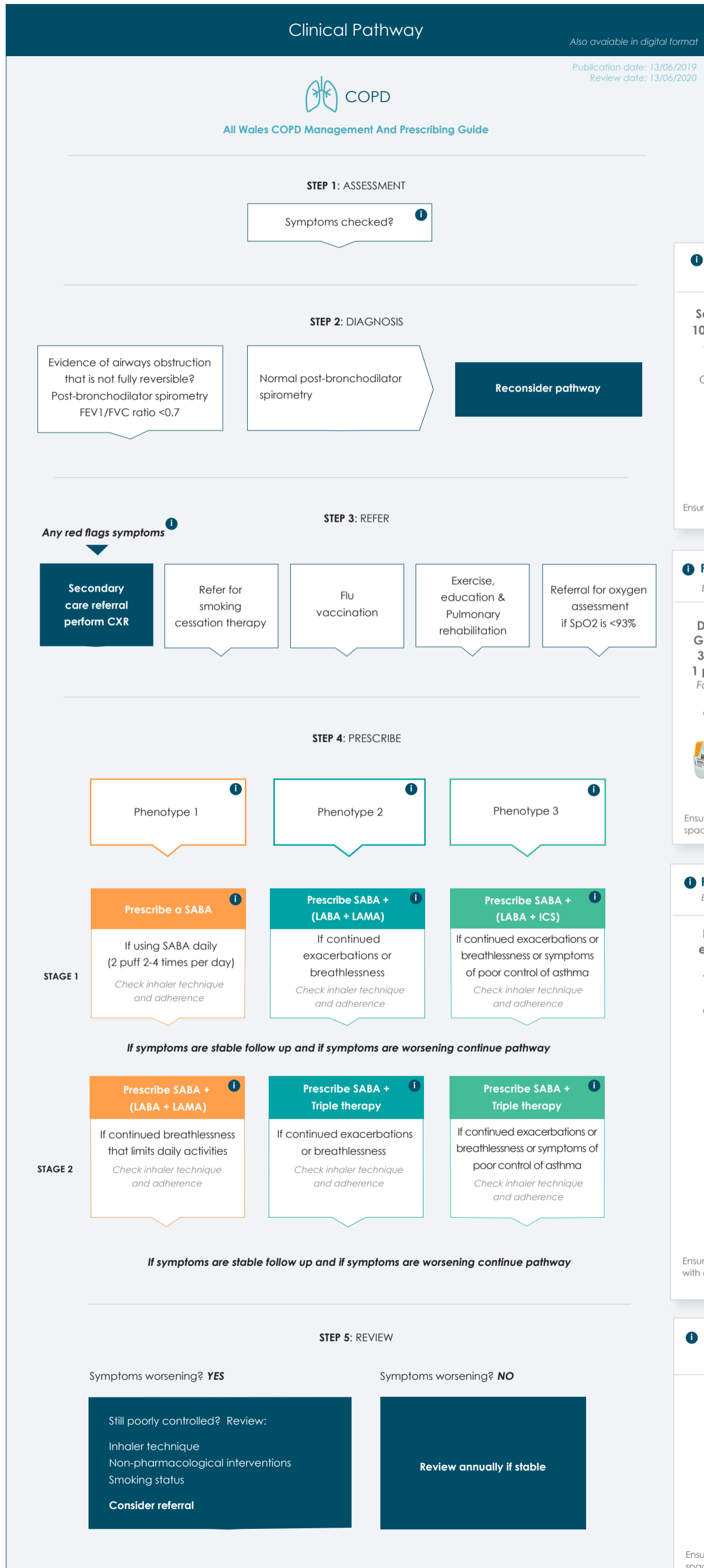
This document should be cited as:

All Wales Medicines Strategy Group, Respiratory Health Implementation Group. All Wales COPD Management and Prescribing Guideline. May 2019.



# ALL WALES COPD MANAGEMENT & PRESCRIBING GUIDELINE

Endorsed by All Wales Medicines Strategy Group



**STEP 1 INFORMATION: ASSESSMENT**

**COPD Checklist**

**Symptom Checklist**

- Smoking history
- Breathlessness (MRC)
- Cough
- Haemoptysis
- Sputum
- Number of exacerbations
- CAT score
- Anxiety
- Depression

**Investigations**

- Post bronchodilator spirometry mandatory
- Chest X-ray (CXR)
- Full Blood Count (FBC)
- Oxygen Sats (SpO2)

**STEP 3 INFORMATION: REFER**

**Red Flag Symptoms**

**Red Flag Symptoms**

- Persistent cough in a smoker
- Haemoptysis
- Chest pain
- Unexplained weight loss
- Clubbing in a smoker
- Abnormal CXR

**STEP 4 INFORMATION: PRESCRIBE**

**Phenotype 1**

COPD with predominant breathlessness  
Dyspnoea with less than 2 exacerbations per year

**Phenotype 2**

COPD with Exacerbation (+/- Breathlessness)  
Two or more exacerbations per year

**Phenotype 3**

COPD with asthma overlap  
Evidence of significant symptomatic or lung function response to steroids (oral or inhaled). Blood eosinophil counts >0.3

**STEP 4 INFORMATION: PRESCRIBE**

**Prescribe a SABA**

Below are options in this category

<p><b>Salbutamol 100mcg MDI + spacer PRN</b> <i>Gentle and deep via spacer</i></p> 	<p><b>Salbutamol 100mcg Easyhaler PRN</b> <i>Forceful and deep</i></p> 	<p><b>Salbutamol 100mcg easibreathe PRN</b> <i>Gentle and deep</i></p> 
---	---	---

Ensure patient can use device. All MDIs must be used with a spacer

**Prescribe a (LABA + LAMA)**

Below are options in this category


<p><b>Duaklir Genuair 340/12</b> <b>1 puff BD</b> <i>Forceful and deep</i></p> 	<p><b>Ultibro Breezhaler 50/110</b> <b>1 puff OD</b> <i>Forceful and deep</i></p> 	<p><b>Anoro Ellipta 62.5/25</b> <b>1 puff OD</b> <i>Forceful and deep</i></p> 	<p><b>Spiolto Respimat 2.5/2.5</b> <b>2 puffs OD</b> <i>Gentle and deep</i></p> 
--	---	---	---

Ensure patient can use device. All MDIs must be used with a spacer

**Prescribe SABA + (LABA + ICS)**

Below are options in this category

<p><b>Fobumix easyhaler 320/9</b> <b>1 puff BD</b> <i>Forceful and deep</i></p> 	<p><b>Relvar ellipta 92/22</b> <b>1 puff OD</b> <i>Forceful and deep</i> <small>Check licensed indications</small></p> 	<p><b>Symbicort turbohaler 400/12</b> <b>1 puff BD</b> <i>Forceful and deep</i></p> 
---	--	---

<p><b>Fostair nexthaler 100/6</b> <b>2 puffs BD</b> <i>Forceful and deep</i></p> 	<p><b>Fostair MDI 100/6</b> <b>2 puffs BD via spacer</b> <i>Gentle and deep via spacer</i></p> 
--	--

Ensure patient can use device. All MDIs must be used with a spacer

**Prescribe triple therapy**

Below are options in this category

<p><b>Trimbow MDI 87/5/9</b> <b>2 puffs BD + spacer</b> <i>Gentle and deep via spacer</i></p> 	<p><b>Trelegy Ellipta 92/55/22</b> <b>1 puff OD</b> <i>Forceful and deep</i></p> 
---	--

Ensure patient can use device. All MDIs must be used with a spacer